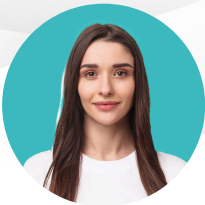


CHARLOTTE HARRIS

Political Director

support@qwikresume.com (123) 456 7899 Los Angeles
www.qwikresume.com



PROFESSIONAL SUMMARY

Passionate political strategist with over seven years of experience in campaign management and grassroots advocacy. Proven expertise in developing comprehensive political strategies, engaging stakeholders, and enhancing community outreach. Adept at leveraging analytical communication techniques and digital platforms to drive voter engagement and influence policy decisions. Committed to fostering collaborative relationships that advance organizational goals.

WORK EXPERIENCE

Political Director

Pineapple Enterprises

Apr / 2021-Ongoing
Santa Monica, CA

- Develop and implement strategic political initiatives to advance organizational goals.
- Directed comprehensive management of organizational infrastructure, including budget planning, fundraising, public relations, human resources, and training initiatives.
- Utilized exceptional communication skills to engage with elected officials and legislative committees, effectively advocating for legislation aligned with constituents' interests.
- Monitored and analyzed ongoing bills and proposed legislation, providing insightful assessments of their potential impact.
- Chaired strategic meetings with organizational leadership to establish policy positions and action plans.
- Build and maintain relationships with key political stakeholders and influencers.
- Built strong relationships with key media outlets, enhancing the organization's reputation and visibility.

Political Director

Summit Peak Industries

Apr / 2018-Apr / 2021
Denver, CO

- Managed a multi-million dollar campaign budget for the Senate Majority Fund, ensuring financial accountability and strategic resource allocation.
- Advised Congressman Gingrey during his successful U.S. Senate race in Georgia, providing strategic insights and campaign support.
- Oversaw the implementation of campaign strategies, coordinating efforts across local, state, and national levels.
- Executed a statewide campaign announcement tour, generating significant media coverage and public awareness.
- Collaborated with campaign officials and candidates as a liaison to strengthen connections between campaigns and local Democratic organizations.
- Designed and implemented voter outreach initiatives, resulting in increased engagement and participation.

EDUCATION

Master of Public Administration

University of Texas

Apr / 2015-Apr / 2018
Portland, OR

Focused on public policy analysis and political management.

SKILLS



ACHIEVEMENTS

- Successfully led a statewide campaign that increased voter turnout by 15% during the last election cycle.
- Developed and implemented a grassroots outreach program that engaged over 10,000 constituents across multiple communities.
- Coordinated a media strategy that resulted in a 25% increase in positive coverage for key policy initiatives.